



www.wash-water-treatment.com

- Wash Water Recycling and Treatment Systems
- Detergent • Accessories • Replacement parts

EpH

pH Neutralization Systems

EpH: pH Adjustment Systems

The EpH systems monitor and maintain a pH set point on a continuous basis from a wash water waste stream and a wide variety of industrial waste streams. The typical wastewater pH range for treatment is from 4-11. Effluent from the pH system is usually in the 6-9 pH range per most local POTW discharge limits.

The neutralization system configuration includes:

- HDPE tank
- Full cover with vapor gasket and inspection hatch
- Mixer with TEFC motor
- 316 SS impeller shaft and axial flow impeller(s)
- One chemical metering pump (optional second pump available)
- pH probe with quick release assembly
- pH controller
- NEMA 4X control panel
- 115V/1pH/50/60Hz and 230/460V/3pH/50/60 Hz power

Systems are configurable to meet the standard continuous neutralization mode or optional manual and semi-automatic batch modes.

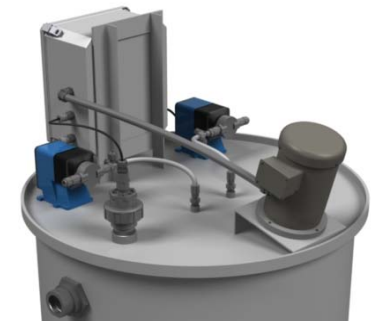
Options:

- Chart recorder
- Effluent diversion valve (available on continuous flow systems only)
- PLC controls
- Explosion proof design class 1 div 1 or 2
- 2nd metering pump & controls
- Alternate tank construction: FRP, polypropylene, coated steel, 304/316 stainless steel.

Larger size systems available.



EpH Systems Equipment Detail					
Model	Flow GPM	Dimensions D X H	Volume Gal.	Inlet/outlet size	Wt Lbs
EpH.05	5	22" X 48"	50	1.5"	90
EpH.10	10	30" X 48"	100	1.5"	120
EpH.15	15	31" X 62"	150	2"	135
EpH.25	25	39" X 65"	250	2"	140
EpH.30	30	45" X 60"	300	3"	152
EpH.40	40	52" X 60"	400	3"	170
EpH.50	50	60" X 58"	500	3"	200



950 N. Rand Rd., Ste 120 Wauconda, IL 60084 USA
 847-487-9166 Fax: 847-487-9218
www.wash-water-treatment.com www.panamenv.com panam@panamenv.com
 ©1991-2014 Pan America Environmental, Inc.

